

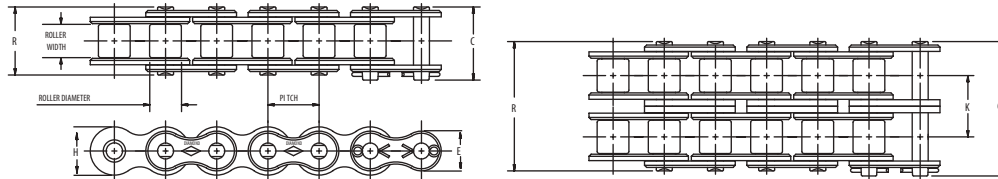


# DIAMOND<sup>®</sup>



## SINGLE AND MULTI-STRAND

Diamond Heavy Series chains are built to ASME / ANSI B29.1 standards and utilize link plate material thickness from the next larger size of chain. Heavy Series Chains are intended for applications subject to heavy shock loads, starts and stops, and forward and reverse travel.



Dimensions in Inches

ASME/ANSI Number	Pitch Inches	Roller Width	Roller Diameter	Pin Diameter	Link Plate Thickness	C	R	K	Pounds Per Foot	Average Tensile Strength	E*	H*
60H	3/4	1/2	.469	.234	.125	1.24	1.17	....	1.18	8500	.615	.713
60H-2	3/4	1/2	.469	.234	.125	2.27	2.20	1.028	2.33	17000	.615	.713
60H-3	3/4	1/2	.469	.234	.125	3.31	3.24	1.028	3.47	25500	.615	.713
60H-4	3/4	1/2	.469	.234	.125	4.34	4.26	1.028	4.61	34000	.615	.713
80H	1	5/8	.625	.312	.156	1.57	1.45	....	2.02	14500	.820	.950
80H-2	1	5/8	.625	.312	.156	2.84	2.72	1.283	3.93	29000	.820	.950
80H-3	1	5/8	.625	.312	.156	4.14	4.02	1.283	5.92	43500	.820	.950
80H-4	1	5/8	.625	.312	.156	5.42	5.30	1.283	7.87	58000	.820	.950
100H	1 1/4	3/4	.750	.375	.187	1.86	1.74	....	2.82	24000	1.025	1.188
100H-2	1 1/4	3/4	.750	.375	.187	3.41	3.28	1.54	5.58	48000	1.025	1.188
100H-3	1 1/4	3/4	.750	.375	.187	4.95	4.82	1.54	8.32	72000	1.025	1.188
100H-4	1 1/4	3/4	.750	.375	.187	6.49	6.30	1.54	11.04	96000	1.025	1.188
120H	1 1/2	1	.875	.437	.219	2.27	2.13	....	4.08	34000	1.230	1.425
120H-2	1 1/2	1	.875	.437	.219	4.20	4.60	1.924	8.04	68000	1.230	1.425
120H-3	1 1/2	1	.875	.437	.219	6.13	5.99	1.924	11.99	102000	1.230	1.425
120H-4	1 1/2	1	.875	.437	.219	8.06	7.92	1.924	15.94	136000	1.230	1.425
120H-6	1 1/2	1	.875	.437	.219	11.91	11.77	1.924	23.84	204000	1.230	1.425
140H	1 3/4	1	1.000	.500	.250	2.44	2.28	....	5.40	46000	1.435	1.663
140H-2	1 3/4	1	1.000	.500	.250	4.50	4.34	2.055	10.65	92000	1.435	1.663
140H-3	1 3/4	1	1.000	.500	.250	6.56	6.39	2.055	15.90	138000	1.435	1.663
140H-4	1 3/4	1	1.000	.500	.250	8.62	8.45	2.055	21.10	184000	1.435	1.663
160H	2	1 1/4	1.125	.562	.281	2.86	2.68	....	7.03	58000	1.640	1.900
160H-2	2	1 1/4	1.125	.562	.281	5.30	5.12	2.436	13.88	116000	1.640	1.900
160H-3	2	1 1/4	1.125	.562	.281	7.75	7.56	2.436	20.68	174000	1.640	1.900
160H-4	2	1 1/4	1.125	.562	.281	10.17	10.00	2.436	27.62	232000	1.640	1.900
180H	2 1/4	1 13/32	1.406	.687	.312	3.28	3.01	....	9.59	76000	1.845	2.138
180H-2	2 1/4	1 13/32	1.406	.687	.312	6.00	5.73	2.723	18.86	152000	1.845	2.138
180H-3	2 1/4	1 13/32	1.406	.687	.312	8.73	8.46	2.723	28.14	228000	1.845	2.138
200H	2 1/2	1 1/2	1.562	.781	.375	3.71	3.39	....	13.38	110000	2.050	2.375
200H-2	2 1/2	1 1/2	1.562	.781	.375	6.79	6.48	3.083	26.38	220000	2.050	2.375
200H-3	2 1/2	1 1/2	1.562	.781	.375	9.88	9.56	3.083	40.85	330000	2.050	2.375
240H	3	1 7/8	1.875	.937	.500	4.85	4.35	....	21.08	157600	2.422	2.806

\* Maximum values are shown.

ASME/ANSI 60 and larger chains are available as cottered or riveted type design.

NOTE: Multiple strand chains are available with slip-fit (standard) or press-fit center plates.

HEAVY SERIES CHAIN

